



Lake Township DRAFT Parks and Recreation Master Plan

2023-2027

Township Board

Robert Hall, Supervisor

Korrinda Winkelmann, Clerk

Kay Ouwinga, Treasurer

Carol Bradley, Trustee

Ben Wolford, Trustee

Table of Contents

| | |
|---|-----------|
| Executive Summary | 4 |
| Introduction | 4 |
| Community Description | 4 |
| Introduction: | 4 |
| Location & Historical Context:..... | 4 |
| Demographics: | 6 |
| Administrative Structure | 8 |
| Relationships | 9 |
| Park Budget and Funding | 9 |
| Resource Inventory | 9 |
| Recreation Inventory | 9 |
| Lakes and Streams | 10 |
| Clam River Park | 13 |
| Township Hall Park | 14 |
| Jennings Community Playground | 15 |
| Green Lake Boat Launch | 16 |
| Crooked Lake Boat Launch | 17 |
| Sapphire Lake Water Access..... | 18 |
| Township Parks and Recreation Resources | 20 |
| Planning Process | 21 |
| Public Input..... | 21 |
| Survey Summary Results | 21 |
| Goals and Objectives | 23 |
| Action Program | 25 |
| Appendix A | 1 |
| Supplemental DNR Attachments | 1 |

Executive Summary

Introduction

This document, the Lake Township Parks & Recreation Master Plan, is intended to guide present and future recreational resource development within the township, including park land, parks facilities, recreational programs, and public open spaces. The plan has been divided into a series of six sections.

This plan, in addition to serving as a guide for recreation facilities and program development, is prepared to satisfy the requirements set forth by the Michigan Department of Natural Resources (MDNR). Recreation plans are required by the MDNR for state and federal grant eligibility.

Community Description

Introduction:

Lake Township, in the southwest quadrant of Missaukee County, was formed in April 1883. The Township covers 36 square miles, including all or part of four lakes (Missaukee, Sapphire, Crooked and Round) and part of Clam River. Lake Township is roughly 20% agricultural, 1% industrial, 5% commercial and 20% recreational, with the remainder as residential.

Lake Township offers many forms of recreation, including two golf courses, three parks, one playground, 2,200 acres of state land, and multiple boat launches/public access points to four lakes and one river. The Township also offers miles of trails used for snowmobiling, cross country skiing and hiking. Water activities are also popular, including fishing, boating, water skiing, and swimming. The state land is often used for hunting.

Tourism is important to Lake Township. During all seasons, tourists use the lakes and rivers, trails, golf courses and state land for various recreational activities. Many residents are seasonal and travel south for the winter months.

Location & Historical Context:

Lake Township is located in Missaukee County, Michigan. Important surrounding cities include Cadillac (Wexford County) to the west, Lake City to the east, and McBain to the southeast.

Missaukee County is located in the north central portion of the lower peninsula of Michigan between the Manistee River to the northwest and the Muskegon to the east. It was largely unpopulated except by Native American hunting camps. No record of permanent Indian habitation exists in the county other than several circle mounds in Aetna Township – the purpose of which is not known. The county was first surveyed in 1840 but had no year-round residents until after the Civil War. Old growth forests covered much of the county at that time, with extensive swampland in the south and east and hilly highlands in the central and northern townships. In the late 1860's,

settlers began moving into the county brought by government land grants, the continuing need for homestead sites for the European immigrants and the northward sweep of timber cutting across Michigan.

Logging camps spread throughout the county's forests. Valuable white pine trees were logged off first, then the old oak, maple, beech, and other hardwoods. Lumber was cut into boards, broom handles, shingles, and bowls. Wood scraps were distilled to fuel a thriving chemical industry. The largest lumber mill in Missaukee County – The Mitchell Brothers Lumber Co. – was in Jennings (northwest side of the township). For 30 years, Mitchell Brothers was the largest employer in the county, and Jennings was a bustling company town. In the 1920's, after most local logging had already closed, Mitchell Brothers finally moved their operation to Cadillac. Hundreds of employees' houses were also moved. and the town of Jennings virtually disappeared overnight.

The growth of the auto industry downstate had an unexpected side effect on Missaukee's economy. Assembly line workers and their families began to head northward for vacation and recreation time in Missaukee's still wild lands, lakes, and rivers. Tourism eventually became a strong element of the local economy, especially in the decades following World War II. Many vacationers bought summer cottages here and later winterized them into retirement homes. Forestry, dairy farming, tourism and...Christmas trees. In the 1960's and 1970's, Missaukee County's sandy soil was found to be a perfect medium for growing many varieties of Christmas trees. Another leg of the local economy was born. Missaukee is now in the heart of Michigan's Christmas tree-growing region, producing millions of trees every year.

Demographics:

When planning for the recreational needs, one of the most important components is to understand the demographics and the social make-up of the community. Township demographic data has been compared to Missaukee County and the City of Lake City to provide a broader picture of the social characteristics. Information from the 2020 United States Census Bureau offers an interesting picture of the Township and of the community. It should be noted that the Census data does not reflect the actual number of persons residing or visiting the Township during the summer months.

Population - Like other communities in northern Michigan, Lake Township is growing. The population increased 24.6% from 1990 to 2000, 13.5% from 2000 to 2010, and another 3.3% from 2010 to 2020. This continuing growth will increase the demand for both resident and tourist related recreational facilities in the Township.

| Jurisdiction | 1990 | 2000 | 2010 | 2020 |
|-------------------|--------|--------|--------|--------|
| Missaukee County | 12,147 | 14,478 | 14,849 | 15,551 |
| Lake Township | 1,980 | 2,468 | 2,800 | 2,893 |
| City of Lake City | 858 | 923 | 836 | 829 |

Age - Lake Township and its surrounding area have healthy age distributions, containing substantial number of people in all age groups. This mix provides diversity and sustainability to the Township, as well as creates a need to have recreational amenities that can serve everyone.

| Age | Missaukee County | % | Lake Township | % | City of Lake City | % |
|-------------------|------------------|-------|---------------|-------|-------------------|-------|
| Under 18 years | 3,561 | 22.9% | 495 | 17.1% | 204 | 24.6% |
| 18 years and over | 8,786 | 56.5% | 1,672 | 57.8% | 434 | 52.4% |
| 65 years and over | 3,219 | 20.7% | 726 | 25.1% | 191 | 23.1% |

Gender - The gender distribution in the Township, County, and City are relatively even between males and females. There are slightly more males than females in both Missaukee County overall and Lake City, while in Lake Township, there are marginally more females than males.

| Jurisdiction | Male | Female |
|-------------------|-------|--------|
| Missaukee County | 7,884 | 7,667 |
| Lake Township | 1,487 | 1,406 |
| City of Lake City | 417 | 412 |

Race - The racial composition in the Township, County, and City is majority white.

| Race | Missaukee County | % | Lake Township | % | City of Lake City | % |
|-----------------------|------------------|-------|---------------|-------|-------------------|-------|
| White | 14,086 | 90.6% | 2,677 | 92.5% | 730 | 88.1% |
| Black | 33 | 0.2% | 6 | 0.2% | 6 | 0.7% |
| Native American | 71 | 0.5% | 12 | 0.4% | 12 | 1.4% |
| Hispanic or Latino | 499 | 3.2% | 66 | 2.3% | 25 | 3.0% |
| Asian | 46 | 0.3% | 12 | 0.4% | 3 | 0.4% |
| Native Pacific Island | 1 | 0.0% | 0 | 0.0% | 0 | 0.0% |
| Two or more | 616 | 4.0% | 104 | 3.6% | 43 | 5.2% |
| Other | 199 | 1.3% | 16 | 0.6% | 10 | 1.2% |

Disabled Persons - If park and recreation facilities are not barrier free, many of these residents will be limited in participating in recreational activities.

| Population | Missaukee County | % | Lake Township | % | City of Lake City | % |
|------------------|------------------|-------|---------------|-------|-------------------|-------|
| Disabled Persons | 2,799 | 18.0% | 463 | 16.0% | 135 | 16.3% |

Household Income - All communities have a median household income slightly lower than the State.

| Jurisdiction | Median Household Income |
|-------------------|-------------------------|
| Michigan | \$ 63,498 |
| Missaukee County | \$ 47,370 |
| Lake Township | \$ 52,550 |
| City of Lake City | \$ 49,609 |

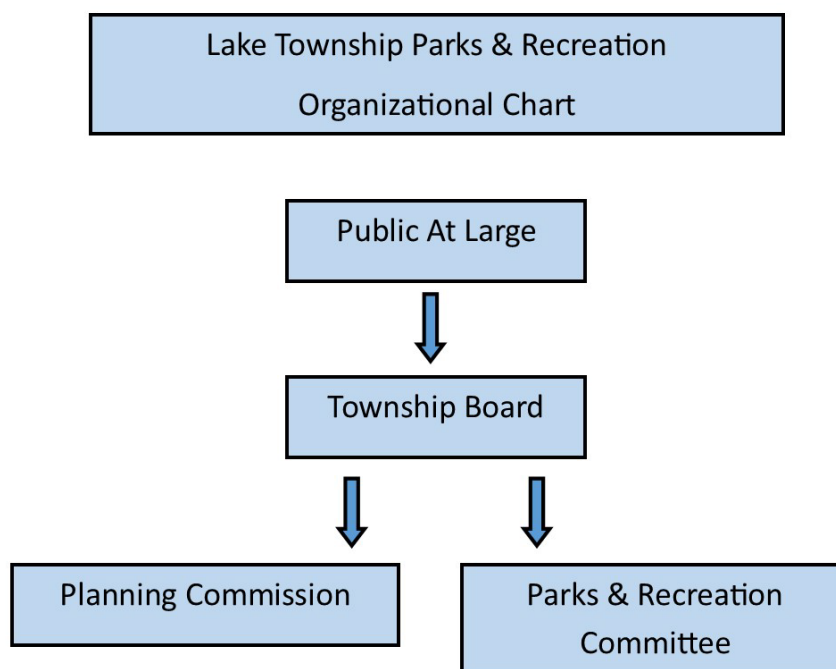
Administrative Structure

Lake Township is a general law township with a township board overseeing daily operations and budget expenditures. Programs and activities are planned with a variety of community groups and county agencies. Maintenance and capital improvements are typically performed on a contractual basis, although there have been significant volunteer efforts in both areas. This coordination of efforts helps to provide the best facilities and opportunities for recreation for all its citizens and visitors to the area. Lake Township will endeavor to make its parks and recreation programs open and accessible to all its citizens. The township maintains a policy of not only constructing its new facilities to meet barrier-free standards, but all repairs and improvements are done to these specifications.

The Lake Township Board is an administrative governmental unit in Lake Township, Missaukee County, Michigan. The Board consists of a supervisor, treasurer, clerk, and two trustees. These positions are four-year, elected terms of office. The Board employs one Ordinance Enforcement Officer as well. The Township Board also has committees of two board members each: Parks and Cemeteries, Building and Grounds, Personnel, New Construction, Sewer, Fire and Roads. Members of committees are assigned by the Board as a whole.

The parks committee consists of two board members appointed by the board at large. This committee meets approximately four times a year, as necessary. The Parks Committee is responsible for all issues concerning the township recreation sites, has been the principal body conducting the non-motorized trails feasibility study and makes recommendations to the township board. All expenditures must be approved by the township board. The Parks Committee sets its goals, taking into account input of the board and township residents.

The planning and administration of recreational programs and facilities rests with the Lake Township Board, Planning Commission, and Parks Committee.



Relationships

Relationships with Other Agencies

The Lake Township Board works with various agencies and governmental units within Missaukee County to provide recreation for its residents. Lake Township contracts annually with the Missaukee Mountain Board to provide winter services at the ski and sledding hill north of Lake City. Lake Township has members sitting on the Lake Missaukee Fire Authority, Missaukee Drain Commission, and the Missaukee County Parks Commission. Lake Township also works closely with the Missaukee County Planning Department and Missaukee County Board of Commissioners.

Volunteers

The Township is always on the lookout for new volunteer partners to help in any capacity possible.

Park Budget and Funding

Annual and Projected Budgets

The financial resources of the Lake Township Board are a critical part of any recreational plan. Currently, Lake Township pays 100% of the monies for the recreation development in the Township. Lake Township hopes to apply for more government grants from in the future to improve the recreation facilities.

(Place Twp Budget Numbers Here)

Funding & Maintenance

Minor recreational improvements and maintenance procurements of materials and labor has been allocated by the board on a needs and requests basis. The township does not currently have contracts to provide maintenance services for the boat launches. As part of the capital improvements budgeting in follow-up to this plan, the township will assess fiscal year allocations for the projected operation and maintenance costs and consider them during the annual budgeting process.

Resource Inventory

Recreation Inventory

Lake Township Parks and Recreation and their consultant, Prein & Newhof, conducted an extensive tour of the township and the recreational facilities located within its jurisdiction. This inventory includes brief descriptions of facilities operated by the township. The recreation facilities have been inventoried for park type, size, and service area. The facilities have also been evaluated for accessibility using the accessibility assessment criteria set forth by the Michigan Department of Natural Resources.

Lakes and Streams

Lake Township and the surrounding county have approximately 4800 acres of inland lakes and miles of excellent fishing streams provide an abundance of both warm and cold-water fishing. Many lakes in the county are self-sustaining and do not require stocking of fish to maintain sport fishing at a desired level, but the stocking of Lake Missaukee, Crooked Lake, and cold-water streams is essential where the demand for fishing is high. In the past, a fish stocking program called McFish has successfully stocked Missaukee, Crooked and Sapphire Lakes with Walleye and Bass.

Both public and private boat-launching facilities are available at numerous lakes. Canoeists have to travel farther to participate in their sport due to the location of the Manistee and Muskegon Rivers, the two most attractive canoeing rivers in the county, in relation to the majority of the population.

The County has over 3700 feet of public swimming beach footage. Lake beaches are one of the major attractions at most resorts and parks, demonstrating the importance of swimming as a recreational activity. An inventory of lakes & streams in the county by name, location, size, and present use is seen below.

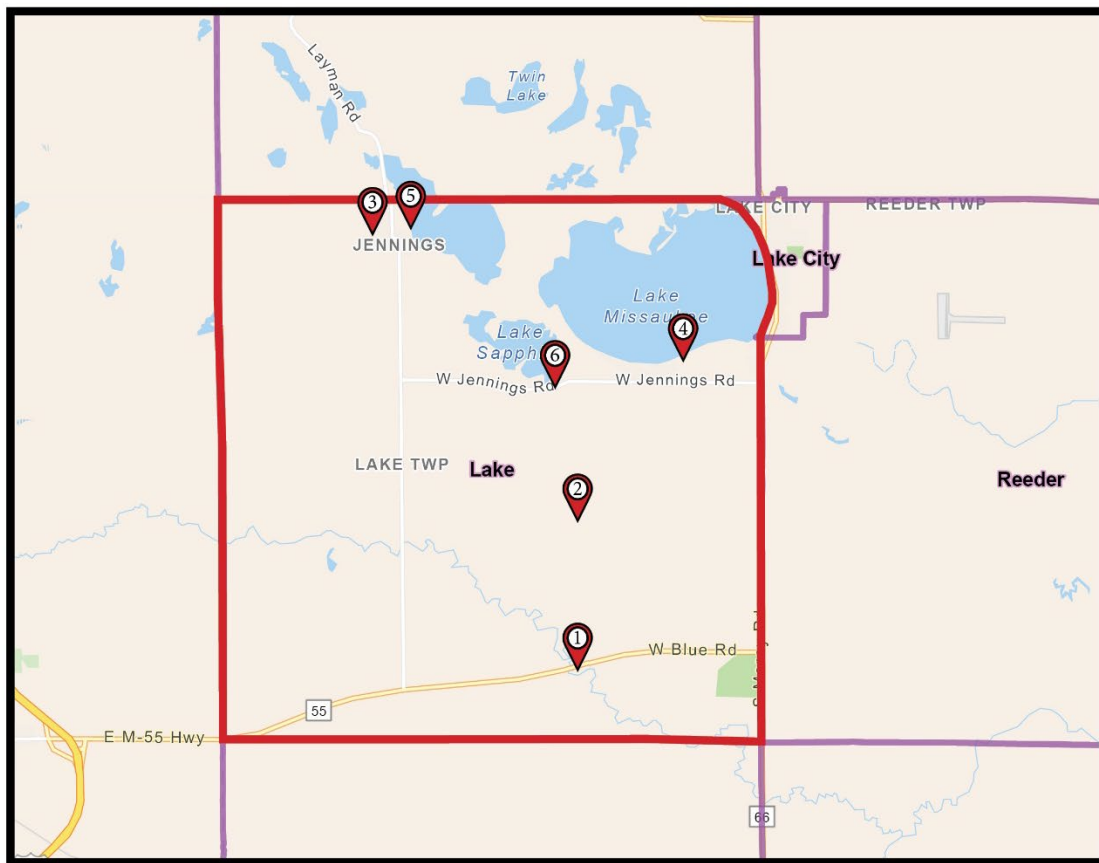
Inventory of Streams - Missaukee County

| NAME | Location (Township) | Fish Species |
|-------------------------------|----------------------------------|---|
| Addis Creek | Norwich | Brook Trout |
| Bear Creek | Holland | Brook Trout |
| Butterfield Creek | Reeder, Aetna, Butterfield | Brook & Brown Trout |
| Cannon Creek | Norwich | Brook & Brown Trout |
| Clam River | Lake, Reeder, Richland | Brook, Brown, Rainbow Trout |
| Dead Horse Creek | Butterfield | Brook Trout |
| Dead Stream Creek | Norwich, Enterprise | Brook, Brown, Rainbow Trout |
| Ham Creek | Bloomfield | Brook, Brown, Rainbow Trout |
| Haymarsh Creek | West Branch, Enterprise | Brook Trout |
| Manistee River | Bloomfield | Brook, Brown, Rainbow Trout, Walleye |
| Marks Creek | Richland, Riverside | Brook Trout |
| Middle Branch River | Riverside | Brook, Brown Trout |
| Mosquito Creek | Reeder, Riverside | Brook Trout |
| Muskegon River | Holland, Enterprise, Butterfield | Brown, Rainbow Trout, Walleye, Northern Pike And others |
| Stick Creek | Richland, Riverside | Brook, Brown, Rainbow Trout |
| Taylor Creek | Reeder | Brook Trout |
| Willow Run Creek | Norwich | Brook Trout |
| West Branch of Muskegon River | Butterfield, West Branch | Brook, Brown, Rainbow Trout |

Inventory of Lakes - Missaukee County

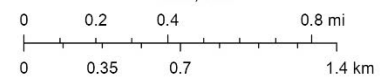
| NAME | Location (Township) | Surface Area (acres) | Use |
|----------------|---------------------|----------------------|---|
| Bear | Enterprise | 31 | Waterfowl, Public Access |
| Clear | Caldwell | 29 | No Public Access |
| Cranberry | Clam Union | 130 | No Public Access |
| Crooked | Lake | 493 | Public Access, Fishing, Campsites, Swimming, Hiking |
| Dyer | Clam Union | 40 | Public Access, Fishing, Campsites |
| Dyer | Caldwell | 125 | No Public Access |
| Goose | Caldwell | 100 | Public Access, Waterfowl. Fishing |
| Goose (Little) | Caldwell | 37 | Waterfowl, Public Access |
| Grass | E. Norwich | 163 | Waterfowl, Public Access |
| Long | Caldwell | 60 | Public Access, Fishing, Campsites, Boat Ramps, Swimming |
| Lost | Caldwell | 31 | No Public Access |
| Loon | Pioneer | 21 | Fishing, Swimming, Public Access |
| Missaukee | Lake | 2002 | Fishing, Swimming, Public Access, Boat Ramp, Camping, Boathouse |
| Reedsburg Dam | Enterprise | 166 | Fishing, Public Access, Waterfowl, Camping |
| Round | Lake | 110 | Fishing, No Public Access |
| Sapphire | Lake | 264 | Fishing, Public Access, Boat Ramp |
| Twin | Caldwell | 143 | Fishing, No Public Access |
| Whitlock | Caldwell | 60 | Fishing, Public Access, Camping |

Overall Township Parks Inventory Map

**Lake City Parks**

1. Clam River Park
2. Lake Township Hall
3. Jennings Community Playground
4. Green Road Boat Launch
5. Crooked Lake Boat Launch
6. Sapphire Lake Acces

1:36,112



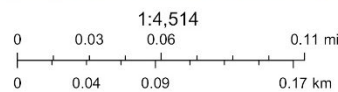
Clam River Park

Size: 12.1 Acres

Location: Intersection of S. Dickerson Road and M-55 in Sections 34 and 35

Background: The property was last improved under a Missaukee County 4-H teen club in 2001. The property has not been the subject of further site improvements in the recent past but is currently being evaluated under the township's recreation planning process.

Facility evaluation: The parcel is a quality riparian edge on the Clam River near the M-55 corridor. It provided informal gravel parking on the road end (S. Dickerson Road) which terminates in a closed former road bridge. A gated rustic pathway allows access to a river edge clearing approximately 100 yards from the improvements. On the opposite side of the road end there are several picnic tables and an information panel for visitors.



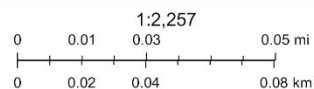
Township Hall Park

Size: 1.3 Acres

Location: The township hall site is located on W. Kelly Road off the corner of S. Dickerson Road in the north central part of the township.

Background: Lake Township in Missaukee County, Michigan was organized in 1883. The Lake Township hall is located at the corner of Dickerson Road and Kelly Road. The original township hall was a two-story building built in 1884 in the Village of Jennings. The second story of the original township hall was moved to the present site in 1924. In the early 1900's Jennings had approximately 2000 inhabitants and was engaged in the lumbering business. Several houses were moved from Jennings to Cadillac after the lumber mills closed. Today Jennings is small residential community with a few evolving home based businesses.

Facility evaluation: A nice facility sign is located on Kelly Road, however approach from the north along Dickerson has no signage. The property has had a recent upgrade with the addition of a small rectangular picnic pavilion on the south side of the parking lot. The Hall meeting room is available for rent to citizens for family functions. A large open field area boarded on the south by a mature row of spruce trees provides a potential for recreational amenities at the hall such as ballfields, volleyball, play equipment or other elements to compliment the picnic pavilion.



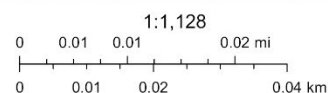
Jennings Community Playground

Size: .25 Acres

Location: The playground site is located on the corner of Elm Street and Crapo Street in the center of the historic village grid.

Background: Little is documented regarding the history of the playground, but a local church group appears to have supported some improvements and upkeep over the years. The historic logging and mill center of Jennings has a rich and interesting past. The old town hall (in private ownership) is still largely in its former aesthetic and location in the center of the old town street grid. To the north of town remnants of a major mill with rail spurs can still be seen (also on private land held by the Indian Lakes Association).

Facility evaluation: The aging playground which had a variety of scattered non-compliant play pieces was recently upgraded. Equipment and new improvements included; fence has been installed around the playground, 10 x 10 sand digger box was installed; 8 x 16 pavilion was built; a full size concrete basketball court was placed. and a tube slide was installed. A large swing two-back swing set, marry-go-round and high slide should also be evaluated to check standards. Play surfacing is minimal.



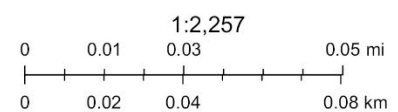
Green Lake Boat Launch

Size: .5 Acres

Location: Green Road end off of Jennings Road.

Background: The site is township operated property under a use agreement and has an easement which widens the road end in order to accommodate a boat launch loop.

Facility evaluation: The site was improved in 2016 to include a launch loop and 7 car-trailer parking spaces, 7 car only parking area with one reserved barrier free parking space. A storm water green buffer has been installed. A new plank boat launch ramp and skid pier, and heated restroom were also installed in 2016.



Crooked Lake Boat Launch

Size: Limited to Road ROW

Location: Poplar Street within the community of Jennings

Background: The site is a Lake Township operated road end small boat launch site providing access to this 264-acre lake shallow lake (8' at its deepest point).

Facility evaluation: The site is immediately adjacent to a lakeside residential home and has a widened informal gravel loop width for launching and parking. A skid pier has been placed historically. The township currently leases the north side of the launch from Indian Lakes West (ILW) to provide width for car-trailer parking. The site is very tight, and the township would like to consider purchasing property from the ILW to develop permanent improvements.



Sapphire Lake Water Access

SIZE: .9 Acres

Location: Jennings Road approximately 1500 ft west of Dickerson Road.

Background: The site is a Michigan Department of Natural Resources (Boating Access Site) BAS Site providing access to this 264 acre lake shallow lake (8' at it's deepest point).

Facility evaluation: The site drives are located on a compound curve along M-55, the clear-vision for exiting vehicles is very poor and traveling speeds along Jennings Road in this area are in excess of 55-60 mph. The site has relatively small turning radii and is tight for parking and maneuvering. While the site has limited land-based resources it affords a nice view of Sapphire Lake and some people amenities.



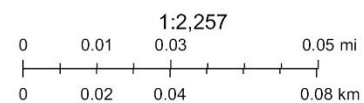
Hemler Park

SIZE: 2.7 Acres

Location: The property just north of Walnut St. along Crooked Lake.

Background: The site was recently purchased by the Township with the intent of establishing a park with water access on the site.

Facility evaluation: The feedback from the public survey is being used to establish a masterplan concept for the site that can meet the needs of the community.



Township Parks and Recreation Resources

| Name | Type | Acres | Accessibility Rating | Amenities |
|-------------------------------|----------------|-------|----------------------|--|
| Clam River Park | Special Use | 12.1 | 1 | Gravel Parking, Picnic Tables , River Access |
| Township Hall | Community Park | 1.3 | 5 | Paved Parking, Shelter w/ Picnic Tables, Open Space, Indoor Rental Space |
| Jennings Crooked Lake Access | Community Park | - | - | - |
| Jennings Community Playground | Community Park | .25 | 1 | Playground, Basketball Hoop, Picnic Pavilion, Swings |
| Green Lake Boat Launch | Special Use | .5 | 5 | Paved Parking, Restroom Building, Boat Launch, Lake Access |
| Crooked Lake Boat Launch | Special Use | - | 2 | Gravel Parking, Lake Access |
| Sapphire Lake Water Access | Special Use | .9 | 2 | Gravel Parking, Lake Access |
| Hemler Park | Community Park | 2.7 | 1 | Newly Acquired Waterfront property |

Accessibility Scores:

1 = None of the facilities/ park areas meet accessibility guidelines

2 = Some of the facilities/ park areas meet accessibility guidelines

3 = Most of the facilities/ park areas meet accessibility guidelines

4 = The entire park meets accessibility guidelines

5 = The entire park was developed/renovated using the principals of universal design

Planning Process

Public Input

Lake Township values the opinions and views of its residents and helped develop the following process to gather the community's thoughts by:

- The consultant, Prein & Newhof, worked with the Lake Township Parks over the course of several months via phone, email, and face to face meetings.
- Making digital and hard copies of the survey available to all residents that asks specific questions of the current parks and their goals for the future.
- The Draft Plan was made available for public for 30 days to allow for public comment.
- Held a public hearing prior to adopting the park plan on **1/11/2023**.

Survey Summary Results

The parks and recreation survey was available from Sept. 26th to Oct. 26th. The public notice for the survey was posted in the Missaukee Sentinel and contained a QR code to the survey along with several locations of where to find/submit hardcopies. There was a total of 120 online responses to the survey. A vast majority of responders reside in the 49651 zip code (61%), are 55+ years old (58%), and prefer to be receive information through websites (55%), social media (50%), and email/newsletter (44%).

67.5% of responders are not concerned with the park systems within Missaukee County continuing to grow. Of the 32.5% that are concerned, the most reoccurring comments are:

- Fees and taxes being increased
- Possibility of tourists polluting
- Higher chance of vandalism

The top 3 barriers making it difficult to visit local parks (including public comments):

- Lack of time
- No people to participate with
- Too many obligations
- Lack of organized programming
- No public awareness of the parks system

The top things residents **like** about the existing recreational facilities are:

- The pickleball courts.
- Close to home and easily accessible.
- Everything is clean and well maintained.
- Everything can be enjoyed with friends and family.
- Water access and views.

The top things residents **do not like** about the existing recreational facilities are:

- Lack of non-motorized trails
- Lack of designated dog areas
- Lack of organized leagues
- Some parks are worn-out and need updating, includes restroom buildings
- Camping availability fills up fast and is hard to secure

Top 3 most visited parks:

- Missaukee Lake Park
- City Park
- Miltner Beach Park

Top 3 reasons why people engage in recreation:

- Close to home
- To be with family and friends
- To have fun

Top 5 recreation opportunities

- Paved multi-purpose trails for non-motorized activities
- Festival and concert venue
- Non-paved multi-purpose trails for non-motorized activities
- Fire pit w/ seating
- Picnic areas

Top 5 most needed recreational opportunities:

- Trail/ pathway systems connecting to neighborhoods & communities
- Child recreation opportunities
- Natural areas
- Adult recreation opportunities
- Exercise opportunities

Feedback regarding the four acres of land on Crooked Lake in Jennings received 55 responses from the public. The most popular Ideas are:

- Dog Park
- More campsites
- Swimming beach and recreational water access
- Walking trails
- Picnic area with pavilion, firepits, and playgrounds

Only 34% of responders believe there is a group of residents that would benefit from additional recreational opportunities. The comments given represent all age groups from children to seniors

Goals and Objectives

The information received from the public survey was reviewed, calculated, and analyzed to identify the communities' goals and objectives. The Lake Township residents who participated in the survey have provided valuable feedback regarding their wishes and desires for the recreational facilities and activities within the Township. The following goals and objectives were formulated based on the total number of surveys that were filled out.

Goal 1: Improve existing Lake Township parks and recreation facilities and programs to provide adequate opportunities for year around recreation for all members of the Community including the children, the elderly, and the disabled.

Objectives: Establish Recreation Programming

- Establish governance for recreation programming such as sporting leagues or community clubs.
- Explore the possibility of creating recreational opportunities such as ballfield/ play areas for recreation programs.
- Partner with other local communities and work with park professionals to help establish programming.

Objectives: Improve Clam River Park

- Develop sustainable and accessible site improvements such as potable water, vault restroom building, and amenities.
- Encourage multi-seasonal use in the Clam River Corridor.
- Continue to work with outside entities like the Michigan Department of Natural Resources and Missaukee County District to construct possible camping sites, repair riverbank erosion, and add accessible fishing opportunities.
- Consider low impact development and sustainable site design criteria.

Objectives: Improve Hemler Park

- Implement the park masterplan developed by Prein&Newhof.
- Add barrier free amenities such as benches, boardwalk, walkways, ADA parking, and fishing docks.
- Develop activities for all ages like playgrounds, sledding hills, pickleball courts, basketball courts, and picnic areas.
- Look into applying for grants to help fund future development.

Objectives: Improve Jennings Community Playground

- Expand/ renovate existing play structures.
- Add designated parking areas.
- Improve overall accessibility.

Objectives: Improve Sapphire Lake Water Access

- Pave the existing gravel parking area and drive entrance.
- Install an accessible kayak launch or fishing dock.

Goal 2: Provide non-motorized connections (Designated Walking Areas and Bike Paths) to and within recreational facilities, schools, and residential areas in order to provide a safe, pleasant, and satisfying recreation experiences.

Objectives:

- Construct or expand designated bike paths throughout the Township where possible.
- Develop bike paths that would connect multiple existing Township Parks where possible.
- Work with the road commission / MDOT to incorporate widened shoulders.
- Construct or expand designated walking areas that would provide greater resources for the whole community, including senior citizens, school children, and those interested in fitness or a leisurely walk.
- Explore the possibility of connecting with other regional trail networks where possible

Goal 3: Look for opportunities to acquire more land in the township for recreation while the property is still undeveloped, available, and affordable.

Objectives:

- Explore the possibility of expanding existing park facilities.
- Consider purchasing land in Lake Township to develop new parks or non-motorized paths.

Goal 4: Improve accessibility within Lake Township parks.

Objectives:

- Work with park professionals for the planning & designing future park projects.
- Consult with local disability groups to make sure future parks and programs meet accessibility standards.

Action Program

Through the knowledge of the Parks Board along with the input provided by the public survey it is apparent that the residents in Lake Township support park improvements/expansion, and love having the parks system. Although recreational programming, non-motorized trails, and designated walking paths is a high priority and will continue to be, park improvement and expansion are important as well.

Communications

According to the survey results, the public prefer to be contacted through E-mail/Newsletter and through the website. The township is planning to continue to improve all communication methods with a focus on digital means.

Park Development

According to the survey 67.5% have no concerns regarding the development or expansion of the parks system as it continues to grow. The most important park developments and new activities that the township will look to expand upon include: more walking paths, more camping areas, barrier free recreational water access, and possibly a dog park.

Trail Development

The trail system in Lake Township needs to be improved and expanded. The survey shows the people consider expanding non-motorized and motorized pathways to be the main priority going forward. Ideally the township wants to create more trails in general and for them to connect to places of interests. The priorities will include connecting residential areas to parks and being able to connect to existing regional trail networks nearby.

APPENDICES

Appendix A

Supplemental DNR Attachments

Survey Results

Public Notices

Public Meeting Agenda / Minutes

Formal Resolution to Adopt the Plan